

INSIDE:

Staff Changes	2
Guided Hikes	3
Farmers Markets	3
Bluebirds	4
Nat'l Aboriginal Day	5
Nursery News	6
River Roundtable	7
Bottles	8
A New Home?	9
CCCU BBQ	9
Wild Foods Fest	10
Annual Picnic	11
Thank You	12



Thanks to our sponsors and supporters, the re-launch of the NALT Calendar for 2013 was a success. Photo: John Young

2014 NALT Calendar Deadline Looming

Thanks to your many wonderful photo contributions, NALT was able to re-launch its annual calendar last year. Thanks also to those supporters who made it a financial success by purchasing a calendar or two. **Please note that the deadline for photo submissions for next year's calendar is fast approaching: midnight, June 28th, 2013.**

The NALT calendar, showcasing photos of natural spaces and features that NALT has helped to protect, will once again be on sale this fall for 2014, and we are still looking for a selection of photos that depict moods of all four seasons—both viewscapes and close-ups.

Specific areas that NALT is or has been involved with include the Linley Valley, Mount Benson (and views from), Harewood Plains, pretty much all the creeks and rivers (and their watersheds) in and around Nanaimo—with special emphasis right now on the Nanaimo River—Martha Warde's property in Qualicum Bay, Hamilton Marsh, Moorecroft Park, the Yellowpoint Lodge property, the Parnassian Woods (Van Kerkoerle property in Cassidy), sites on Lasqueti Island, South Winchelsea Island, Gabriola Island and Mudge Island, plus local area parks where NALT has been involved with invasive species removal over the years. Also, close-ups of local flora and fauna that are found in any of these locations are welcome. If you can think of some site or feature that we have missed on this list and you have a great photo, send it in for consideration. We generally do not use photos that feature people or pets. This calendar is about natural places, not faces.

How to participate? Please share with NALT up to five of your special photos that depict the natural beauty that makes this area such a great place to live. **The deadline for 2014 photo submissions is June 28th at midnight.** For photos to be considered, they need to be formatted in landscape (wide, not tall) and of a high enough resolution for clarity when they are printed at the calendar size of 8 1/2" x 11". Please email your photos to paul@nalt.bc.ca before the deadline or drop off a digital copy at the NALT office.

Photographers whose images are chosen for the calendar will receive 5 free copies of the 2014 calendar. You will be asked to sign an agreement granting NALT limited rights to use your photos for other NALT fundraising items (such as note cards, postcards and posters). And, you will receive recognition each and every time your photos are used.

NEWS FROM NALT

is published by the
Nanaimo & Area Land Trust

NALT's Mission is:
*to promote and protect
the natural values of land
in the Nanaimo area*

The Nanaimo & Area
Land Trust Society
was registered as a B.C. Society
in 1995, and subsequently was
granted charitable tax status
and the right to hold
conservation covenants.

Charitable tax #:
893193771

Staff

Executive Director: Gail Adrienne
Executive Assistant/
Volunteer Coordinator:
Paul Chapman
Plant Nursery Manager:
Susan Fisher
Administrative Assistant:
Laurie Rezanoff
Financial Manager:
Deanna Bickerton
Contract Services: Jenn Wilson

Pro-bono Consultant

Conservation Covenant Specialist:
Anne Kerr

Board of Directors

Holly Blackburn
Jennifer Davidson
Dean Gaudry (co-chair)
Allan Hawryzki
Dale Lovick (co-chair)
Austen Scott
Ron Tanasichuk
Catherine Watson
Wally Wells
Fraser Wilson
Jim Young

Board Director Emeritas

Barbara Hourston

contact us at:

The NALT Stewardship Centre
Madrona Building (lower floor) Suite
8, 140 Wallace Street
Nanaimo, B.C. V9R 5B1
phone: (250) 714-1990
email: admin@nalt.bc.ca
www.nalt.bc.ca

Staff Changes at NALT



Goodbye Betty

June has been a time of change for the NALT Centre. After more than 15 years of service to NALT, Betty Penston is moving on to a full-time work opportunity at the Nanaimo Disability Resource Centre. Betty has been with NALT since the very early days – sometimes as a volunteer, sometimes in a funded work program, sometimes (as we all have been) laid-off for lack of funds and back in a volunteer role, and, in recent years, as our hard-working Administrative Assistant and “jack of many trades”. She has seen NALT grow from a one-room office and a few boxes of files, to the vital and varied community organization we are today.

From the great successes of Linley Valley and Mount Benson acquisitions to times of scarcity, through feast and famine, Betty has diligently worked to maintain our membership lists, document financial transactions, and manage a multitude of records and sundry office tasks. Betty's keen eye has helped keep this newsletter from spelling mistakes, improper punctuation? And modifiers misplaced. We are missing her already!

Good luck Betty, and thank you for all your good work

Hello Laurie

Laurie Rezanoff has just joined the NALT team, and now faces the daunting task of taking on Betty's role and responsibilities as NALT's new Administrative Assistant. Laurie moved to Nanaimo from her home town of Calgary three years ago. She says it was an “intuition” move, and she has never looked back. She seems to have happily adjusted to the milder but wetter ways of coastal living.

Recommended to NALT as a quick study, Laurie is sure to be up to speed in record time. But, while she may spend her hours at NALT working with databases and financial systems, she has confessed that her true passion is the study and application of Astrology.



Welcome to the team, Laurie!

Guided Hikes 2013

NALT's guided hikes season kicks off this month with a hike to the summit of Mount Benson on Saturday, June 22nd. Interested hikers should call or email the NALT office to sign up for a guided hike to the top of this iconic local mountain.

Looming large on the horizon and in the hearts of Nanaimoites, Mount Benson has seen increased interest and usage since the front face became a Regional Park in 2005—thanks largely to generous community support for an acquisition campaign spearheaded by NALT in the early years of the new millennium.

If you've wanted to hike the trails to the summit, but have been unsure of the routes, this is your opportunity to be led by a guide who is very familiar with the various routes to the top and back, and who can point out special features. It is significant to note that the first guided hike falls *before* the deadline for photo submissions to NALT's 2014 calendar; so here's your chance to get some good shots and submit them to NALT by midnight of June 28th.



A group of hikers approach the summit from a route along the backside.

Keep in mind that the hike is a tough one—both up and down. The lower half of any route up or down is very steep, and can be hard on knees or hips. With a guided group, we allow between five and eight hours for a return trip. If you would like to sign up, or just want more information, please call 250-714-1990 between 10am and 5pm Monday through Friday and ask for Paul, or email paul@nalt.bc.ca. If you use email, be sure to add a phone number where we can reach you. The cost to participate is \$10. Additional dates will be advertised on the NALT website from now until fall, dependent on guide availability.

Go to www.nalt.bc.ca and check for later dates

At the Farmers Markets

NALT volunteers have so far spent two days at local Farmers Markets: the first was at the Cedar Market on Sunday May 26th, and the second time was at the Bowen Road Market on Wednesday, June 5th. Another four days are scheduled between now and the fall.

This new venture is a trial run to see whether attending the markets might increase the NALT *Natural Abundance Native Plant Nursery's* visibility and sales. So far, sales have been modest—with revenues of \$86 the first day, and \$99 the second day. But there is also the “visibility” factor.

And, says Markets Coordinator, Tamera Rogers “*We had a very fun day at the market [on Bowen Road]. We sold a variety of plants, but no seeds or herbs. We sold the White Walnut tree, a big sword fern and quite a bit of wild ginger. Those who didn't buy often looked and learned about some of the plants. All in all, I feel it was a success.*”

However, the logistics of getting plants, tables, tent and volunteers to and from the markets is proving to be a time-consuming challenge – not to mention the gas consumed in the distances between Nanaimo, the nursery and the market locations.

We are keeping careful records of time and costs, and will evaluate at the end of the season whether it proves to be a worthwhile use of volunteers' time.

Meantime, watch for NALT at one of these two markets on the following dates:

BOWEN ROAD MARKET: June 26th, July 10th and September 11th

CEDAR MARKET: September 22nd

The Bluebirds Story: Year Two

Some Background

These are exciting times for *the Bring Back the Bluebirds Project*. In May and June 2012, GOERT translocated 8 adult and 9 juvenile bluebirds from Washington State to the Cowichan Valley: 2 adult pairs that had not yet nested that spring, and 2 pairs with nestlings. One pair that arrived with nestlings went on to produce a second clutch at their release site. These are the first Western Bluebirds known to have hatched on Vancouver Island since 1995. Five eggs were laid, of which 4 hatched. These historic nestlings fledged on July 29th and were raised with the help of their older translocated siblings. Several reported sightings over the summer gave us hope that the other 3 pairs had established territories and successfully bred elsewhere in the Cowichan Valley. The goal is to translocate 90 adult pairs over the five-year project.

Year Two is Well Underway.

In May, observers found Bluebird eggs in a nestbox on a farm at the north end of Quamichan Lake. The female of that breeding pair laid seven eggs—an above-average clutch of eggs for an above-average bird. This female is a member of the historic brood that was raised at Cowichan Garry Oak Preserve last summer, and project followers were thrilled when she migrated back to her birthplace this spring, along with her three siblings. Her mate is an adult who was translocated to the area from Washington state earlier this spring.



And there are more signs of success:

recently, when technicians visited the nestbox of a pair nesting near Somenos Lake, they found five eggs. Says Conservation Specialist Kathryn Martell, *“The male was translocated this spring to a nearby property, and until now, his chosen mate has been a mystery. She is not the female that spent several weeks with him in the aviary. While she was perched on a low Garry Oak branch, we were able to see her leg bands with a spotting scope, revealing her identity: she was banded on San Juan Island last year and is the first immigrant to Vancouver Island’s new Bluebird community!”* Gary Slater of Ecostudies Institute notes, *“This is the first evidence of dispersal and connectivity between islands, and emphasizes the importance of establishing multiple local populations in order to have a viable Western Bluebird population throughout the region.”*

So far this year, six new pairs of Bluebirds have been translocated to the Cowichan Valley; and more are on their way with families of fledglings. By mid-June, several families of young Bluebirds left their nests—both those who hatched from eggs laid in the area, and those who were translocated this spring—and two other broods are still in their nests. Observers are hopeful that the adult pairs will lay a second clutch in the weeks ahead. The small new Western Bluebird population in the region appears to be doing well.

Historical Context

Once common on southern Vancouver Island and the southern Gulf Islands, Western Bluebird populations began to decline in the 1950s. By 1995, they were no longer breeding in southwestern BC or the west coast of USA, and were rarely seen. Their rapid decline was probably due to a combination of loss of Garry Oak habitat, removal of standing dead trees that provided cavities for nesting, reduction of insect prey due to pesticide use, and competition non-native bird species such as Starlings and House Sparrows.

(Bluebird story continued on page 5)

The Garry Oaks Ecosystem Recovery Team (GOERT) and partners are working to restore a healthy breeding population of Western Bluebirds to our islands. Working together through voluntary stewardship, land conservation, and targeted restoration activities, GOERT is working to re-establish a breeding population of Western Bluebirds (*Sialia mexicana*) on southeastern Vancouver Island and the southern Gulf Islands.

GOERT's Goal: To Restore This Missing Piece of Endangered Garry Oak Ecosystems

Today, Western Bluebirds are recovering throughout Washington and parts of Oregon. GOERT is leading conservation efforts to bring back the Bluebirds to Canada's Garry Oak ecosystems in two ways:

- supplying nesting cavities in safe foraging and breeding habitat by mounting nestboxes
- re-introducing translocated bluebirds to recreate healthy breeding populations

To learn more about this GOERT Project, see www.goert.ca/bluebird

Rebuilding a Western Bluebird Population

Building on the success of the 5-year San Juan Islands Western Bluebird Re-introduction Project (2007-2011), and using their project as a model, GOERT is translocating birds from a healthy population at Military Base Lewis-McChord, and providing an abundance of nestboxes in good habitat and mealworms as a supplementary food source.

Replacing Missing Habitat Elements

Adding nestboxes has reversed Bluebird population declines in many parts of North America. Since 2004, project partners have been installing nestboxes as far north as Nanoose Bay. Nest boxes have been placed in Garry Oak meadows in parks and protected areas, in healthy, pesticide-free agricultural areas, and other open meadow habitats on golf courses and private lands. The present nestbox program is focused in the Cowichan Valley, Metchosin, the Saanich Peninsula, and the southern Gulf Islands.



Over time, Western Bluebird populations may increase and spread throughout their historical territories of the southern part of east Vancouver Island and southern Gulf Islands—anywhere that Garry Oak ecosystems remain healthy. Watch for these bright blue birds to arrive in your neighbourhood!

Celebrate National Aboriginal Day

June 21st is National Aboriginal Day. This year will see a change of location for celebrations organized by the Snuneymuxw First Nation. They will take place in Departure Bay, which was called Stl'i lep by the Snuneymuxw people—and was the site of their historical winter village.

THE BACKYARD
Wildbird & Nature Store

Quality Birding Supplies
and Expert Advice
Tel: (250) 390-3669
www.go-nanaimo.com/birds

#6-6404 Metral Drive, Nanaimo, BC
V9T 2L8

Celebrations, to be held at the Kin Hut, will run from 2:30 to 6:30 pm. Highlights of the day will include drumming and dancing, vendors of traditional and contemporary arts and crafts, as well as informational displays and other activities.

Look for more information in local media as the day approaches, or call Tara White at 250-740-2300. Join the celebrations; and start a conversation!

Nursery News

It's been the busiest spring ever for the NALT Native Plant Nursery: more shoppers, more sales, more volunteers, and more plants. In fact, we've increased our stocks by about a thousand plants. The combination of great spring rains and mild weather have made for happy plants and beautiful gardens.

What's new at the nursery? Our hours are now 10am to 4:30pm Wednesdays and Saturdays. A good way to see what we have in stock is by checking our plant inventory on the *Natural Abundance* Nursery page of the NALT website—updated monthly. Many plants that were salvaged or propagated in the fall and early spring are now ready for sale. Our newest product is dried stinging nettle. This nutritious spring green is dried by volunteers and ready for sale when the season is over.

What's in blossom at the nursery this June? Native orange and yellow Columbine, purple Penstamen, Broad-leaf star flower, Lupine, Bleeding heart, Wild ginger, Strawberries, Nodding onion, fool's onion – a glorious array of summer-flowering herbaceous plants. Berry plants are now in blossom and developing fruit. Walking around the nursery site is like a treasure hunt when you look at the lush green growth and emerging summer bloom colours, accompanied by birds, snakes, frogs and lots of wild bees.

What were the most popular plants this spring? It's a personal preference for sure, but the plant we sold most was wild ginger. The pictures show its allure—with glossy heart-shaped leaves and unusual purplish-brown blooms. Many shoppers took a plant home to look forward to a



spreading patch that can be harvested for cooking in a few years. We also sold lots of Woodland and Coastal strawberries and many bulb plants. This year Tiger lilies, Camas and Shooting star have been very popular.

Earlier this spring, we were busy at the usual plant sales. Now we've begun participating in local Farmers Markets (see the companion story *At the Markets page 3*). Market Coordinator, Tamera Rogers, would appreciate any volunteer support you can offer to staff tables and transport plants for the summer markets. She says it's great fun!

Besides individual sales, we are also expanding to fill more large orders. In early spring, we sold and helped to plant more than a thousand plants at the Tillicum Lelum facility on

10th Street in Nanaimo. Please let us know if you hear of organizations, builders or homeowners who anticipate large landscaping jobs. We would love to talk with them about the advantages of choosing native plants for their landscaping needs.

One more bit of help that would be appreciated: as native plants mature, we would like their seeds. Volunteers will then prepare and package the seeds for sale. NALT has done well with seed sales, but we can only continue if we gather seeds annually. If you have native seeds on your property, please collect and dry some (never harvest all of them; keep some for new plant propagation and backyard wildlife) and bring them to the NALT office or the nursery.

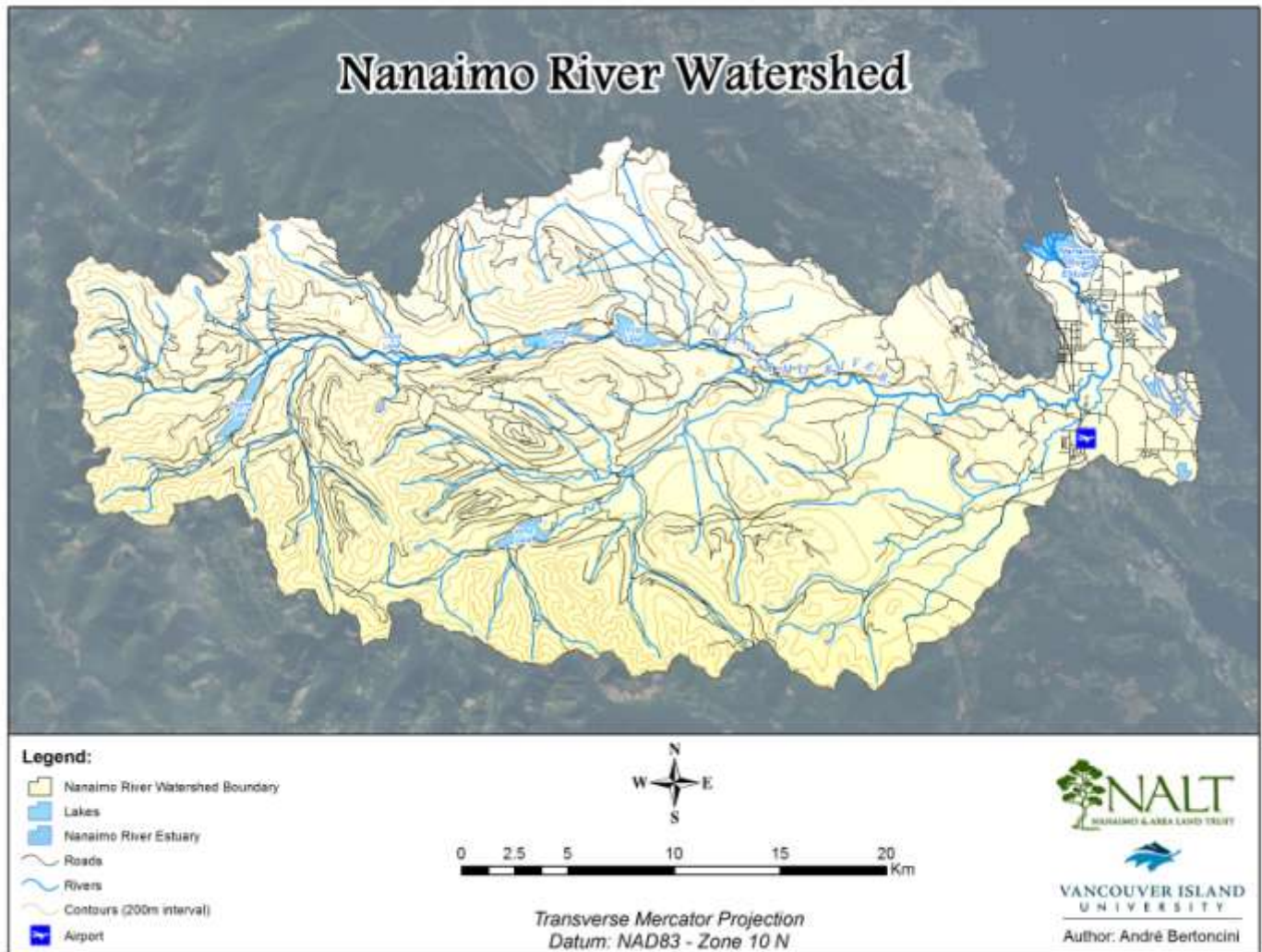
Volunteers are needed in so many ways—from working at the nursery Wednesday or Saturday to gathering or packaging seeds at home, working at plant sales, salvaging and propagating. We appreciate our volunteers; whatever time they have to share is always welcome.

Submitted by Susan Fisher, Nursery Manager

Nanaimo River Watershed Roundtable

The Nanaimo River Watershed Roundtable is a multi-stakeholder initiative to share information, opinions and strategies about long-term stewardship and protection of the watershed. The NRWR held its second meeting on May 15th to continue its work to promote the significance of the Nanaimo River watershed and its environmental, social and economic values for the Nanaimo area.

At the first meeting of the Roundtable on February 12th, discussions focused on the role of the Roundtable in the community, and plans for stewardship of the watershed. From those discussions, a list of groups and organizations not yet involved with the Roundtable was generated, and sub-committees were formed to begin planning for activities identified at the meeting.



At the second meeting, two new stakeholders—the Nanaimo River Hatchery and Nanaimo Forest Products (Harmac)—attended, bringing the total number of stakeholders now participating on the Roundtable to 16.

The committees that were formed in February gave reports on their work to date. A Communications Committee, charged with developing a vehicle for both internal and external communications of the Roundtable, presented models of online collaboration and posed questions for Roundtable participants to consider. The Awareness and Education Committee received support to plan Rivers Day events that will promote the watershed in the community. Stay tuned as plans develop to add some new enjoyable and informative activities for Nanaimo's Rivers Day events on September 29th.

(story continued on page 8)

Roundtable Continued

The next committee needed is one to develop a Budget for Roundtable Operations. This committee will meet to draft an annual budget prior to the next Roundtable meeting in mid-September.

Two member organizations of the Roundtable also gave presentations at the May meeting:

- Rob Lawrance, Environmental Planner with the City of Nanaimo, spoke of the experiences of the Nanaimo River Estuary Committee as they have worked to build relationships between government levels (including Snuneymuxw First Nation), interest groups, industry and individuals, striving to balance cultural, natural and economic activities in the estuary.
- Dean Gaudry, Co-Chair of the NALT Board of Directors, presented on behalf of NALT's Acquisition Committee. He outlined some of the steps and studies that NALT typically carries out to determine suitability of lands available for purchase that meet NALT's mission: *to promote and protect the natural values of land in the Nanaimo area*. NALT is currently looking at lands formerly managed by TimberWest for forestry values, now on the market through TimberWest's real estate arm, Couverdon.

Thanks again, on behalf of all the participants, to Marjorie Stewart for her excellent facilitation of Roundtable meetings!



Bottles for the River

On the morning of Saturday April 6th, under an grey sky with occasional rain showers, a crew of stalwart NALT volunteers gathered in the parking lot of Lucky's Liquor Store at the Country Club Centre for a *Bottles for the River* fundraiser. The crew worked through the day to sort a steady stream of donated refundable containers of all sizes and kinds. Once again, a hearty BBQ lunch was served up to sustain everyone's efforts and energies.

After we had experienced a particularly poor day for the NALT *Bottles* fundraising efforts in January, the April numbers bounced back: the total on this day was just under \$1,200. While this is a far cry from totals of \$2,500 to \$3,500 a few years back, it is quite respectable and worth the effort in this time of greater competition for *all* kinds of donations. And the day's haul is not the whole picture; more and more of our supporters take the time to go directly to the Nanaimo Regional Recycling Depot with their returnables—and say “*Please put it on the NALT account.*”

Thanks to everyone who took the time to drop off returnable containers—either on the day or by taking them directly to the depot at some other time. Proceeds from these donations are currently being used by NALT to help cover expenses for the Nanaimo River Watershed Roundtable and its initiatives.

Thanks to the Country Club Centre and to Lucky's Liquor Store for providing us with space for the day (extra thanks to Lucky's – Lynette and Ayaka - for their in-store promotion and donation program); to Starbucks (University Village) for coffee and fixings; to Save-on-Foods for burger “fixings” and a great big tent; to the Running Room and Arrowsmith Bikes for *their* tents also; and to Nesvog Meats for giving us such a great deal on pre-cooked beef patties for our volunteers' lunch.

As always, special thanks to all of our super volunteers. You transform what could be a mundane and sticky task into a super social event, while getting the job done. Great job!

NALT's next *Bottles for the River* will be held on Saturday, July 6th, 9am to 2:30 pm, in the parking lot beside Lucky's Liquor Store. Hope to see you there.

SOS - NALT Needs a New Home

For the past 11 years, NALT has been living month to month at our “temporary” location on the lower floor of the Madrona Building, 140 Wallace Street. From time to time, we have ventured out to look at other possible locations that would suit us better—with no success. Now, the NALT Board and Staff have decided we really need to get moving and find a new, more suitable home! And, we could use help from the eyes and ears of our members and supporters.

Here is our wish-list:

- A more visible location—where people can find us easily and passers-by will notice us
- Preferably in the downtown area, but could be as far north as Country Club area
- A yard front and back—for a demonstration native plant garden in the front yard and a plant sales outlet in back
- A location that is zoned for plant and other merchandise sales
- About the same amount of indoor space as we have now (office/meeting/display space of about 1,200-1,500, plus storage)
- Accessibility
- Sufficient parking
- Maximum cost: \$2,000/month (currently paying \$1,800). If a donation is made that reduces the cost to below market value, NALT can provide a charitable tax receipt for the difference.


If you can help NALT to find a more permanent location that includes the features above, we will be forever in your debt!

AQUAPARIAN

Environmental Consulting Ltd.

503 C OMOX ROAD, NANAIMO, BC V9R 3J2 • WWW.AQUAPARIAN.COM

TEL (250) 591-2258 FAX (250) 591-2257 E MAIL SBONAR@AQUAPARIAN.COM | CZAMORA@AQUAPARIAN.COM



**Windward
Neighbourhood**
Pub and Wine & Beer Store
We are leading the way in
Quality • Service • Atmosphere

#14-1588 Boundary Crescent, Nanaimo, BC V9S 5K8
PHONE: Pub.... (250) 754-7111
Wine & Beer.... (250) 754-7500 FAX(250) 754-7530

BBQ at Bowen Road CCCU

If you happen to be in the vicinity of the Bowen Road branch of the Coastal Community Credit Union around lunch time on the last Friday in June, stop by for a burger or hot dog prepared and served by NALT staff.

WHEN: Friday June 28th, 11:00 am until 2:00 pm
WHERE: Bowen Rd CCCU Parking Lot
WHAT: Beef Burgers, Hot Dogs, Chips, Cold Beverages

This is one of several fundraising events in June at the CCCU, the proceeds of which will be shared by the SPCA, the CDC and NALT

Wild Foods Festival 2013

The 4th Annual Wild Foods Festival, held in tandem with the City of Nanaimo's Earth Day Celebrations, was once again a highlight of the season for this community.

Each year this event has grown, and 2013 was no exception. More attendees enjoyed more foods from more chefs than ever before. Many community groups and vendors also enjoyed sharing their interests and wares with the crowds.

Attendees enjoyed incredibly delicious samples of wild foods prepared by 11 local chefs; learned tips for identifying, ethically harvesting and utilizing wild ingredients in their home cooking; heard about the efforts of community groups to steward the natural places that make the region a great place to live; bought local foods and other products from island vendors, and danced in the aisles to the lively rhythms of musicians who entertained throughout the day.

Many volunteers worked hard to make sure the event ran smoothly; and with their feedback and other input from festival-goers, we promise that next year's festival will be even better. At WFF #5, look for more of everything you've come to expect—and some new features as well.

Special recognition goes to Stephanie Mills, NALT's Wild Foods Festival Coordinator, and Deborah Beck, City of Nanaimo Recreation Coordinator, for their well-coordinated work as part of the festival planning and organizing team.

We also want to thank Festival Sponsors for their support:

TD Friends of the Environment Foundation, Environmental Dynamics Inc., Quality Foods at University Village, Thrifty Foods at Port Place Mall, and RONA.

The crowd was steady and the chefs were ready at the Wild Foods Festival



Nature provides a free lunch, but only if we control our appetites. - William Ruckelshaus



NALT Donation Form
THE MOORECROFTERS' CAMPAIGN
to raise money for
the restoration of Kennedy Lodge at
Moorecroft Regional Park

I, _____
 would like to **donate** to the Moorecroft Stewardship
 Committee

My donation of \$ _____ is enclosed;
 cash, cheque or credit card (circle one)

VISA/ MC# _____

Expiry ____ / ____ Signature _____

Mailing Address: _____

City/ Town: _____

Postal Code: _____ Phone: _____

Email: _____

Cheques should be made payable to
 "NALT – Moorecroft Stewardship Committee"

Charitable receipts will be issued for all donations of \$20 or
 more. NALT's charitable tax # is 893193771

Please record this contribution in the name of, if other than
 yourself:

I would like to remain anonymous on all NALT lists and
 literature (circle one) NO / YES

Thank You for Your Support!

13th Annual
 Parnassian Woods Picnic

**Join a social gathering of
 NALT members and supporters
 on Sunday, August 18th, from
 12:00 noon until 4:00 pm
 for the 13th Annual NALT Picnic
 under the old apple tree
 at Peter and Anneke's place.**

**Great Food Mellow Music Guided Walks
 August Ambiance**

**Salmon or Veggie Burger Plate
 Full Meal Deal: only \$10**
 (includes condiments, veggies/fruit,
 dessert & beverages)

**Just Burger: \$6 (with condiments and veggies)
 Just Dessert and Fruit Plate: \$4
 Just a Beverage: \$1**



Music, friends, food and fun at the Annual NALT Picnic

*The greatest monuments to our wisdom
 are not the things we build
 but the things we leave untouched.*
 —Phaedrus

~ THANK YOU ALL ~

Many thanks to all the individuals, organizations and businesses who have donated their time and skills as volunteers, contributed items or services, made financial donations, renewed or started a membership, or begun a monthly pre-authorized contribution (PAC).

from February 26, 2013 to June 14, 2013

Donations for Linley Valley: Joris Wiggers & Elizabeth Herman

Donations for Moorecroft:

In the Name of: Tom Zavesiczky

In Memory of: Marjorie Mitchell—anonymous

Donations for Mt. Benson Phase II: Richard & Mary Cabell; WorkSafe BC Helping Hands Club

Donations for Nanaimo River Project: Jan Cook

Individual Donations for NALT: Eleanor Routley; Greg & Kat Yoshida

In Honour of: Barbara Hourston's 80th birthday; Greg & Kat's wedding

In Memory of: Taylor Booth (2); Raye McAllister (7)

Individual Donations/Memberships : Aztec Appliances Ltd.; Rhonda Bailey; Kanya & Steve Baillie; Simon Bennett; Jan Cook; Blake Drummond; Kristy Gabelhouse; Gillian & Alex Guy; Joyce Lee; William J. Robertson; Doug & Joan Roszmann; John Shelbourn; Catherine Watson

Business & Organization Donations - NALT: Lucky's Liquor Store; Nanaimo River Hatchery; Provincial Employees Community Services Fund; Wells Infrastructure Group; WorkSafe BC Helping Hands Club

Volunteers from February 23rd, 2012 to June 14th, 2013:

Gail Adrienne, Travis Barrington, Judy Beer, Deborah Beck, Dianne Bestwick, Deanna Bickerton, Holly Blackburn, Colin Brown, Sean Cameron, Ruth Caspell, Paul Chapman, Don Cohen, Linda Cole, Gregg Comrie, Deryck Cowling, Rose Dauk, Allan Davidson, Jennifer Davidson, Yvonne de Quincy, Ria De Vos, Victoria Drakeford, Blake Drummond, Doris Edwards, Kate Evans, Allen Felker, David Fisher, Susan Fisher, Linda Fraser, Dean Gaudry, Jo Graham, Didi Grimes, Derrick Grimmer, Bryan Gustafson, Jeff Hawker, Allan Hawryzki, Helen Hayto, Kim Hogg, Pat Hogue, John Holubeshen, Barbara Hourston, Denis Hughes, Bill Jackson, Trish Jennings, Peter Jeremy, Allison Kennet, Stefan Kennet, Barbara Kerfoot, Anne Kerr, Jackie Krezmer, Richard Kuhn, Dale Lovick, Joe Materi, Lorenna Mathieson, Carly McDavell, Joel Mills, Stephanie Mills, Wayne Morgan, Arla Jean Murch, Susan Murphy, Betty Penston, Julie Pisani, Jason Playford, Janice Porteous, Clementine Ralston, Laurie Rezanoff, Ellis Richer, Tamera Rogers, Doug Roszmann, Ray Roy, Harriet Rueggeberg, Jane Saxton, Chris Scorah, Amanda Scott, Austen Scott, Caimen Shapiro, Louise Shuker, Beth Stanley, Marjorie Stewart, Ron Tanasichuk, Judy Tencer, Hamish Thomson, Anneke Van Kerkoerle, Cindy Walker, Catherine Watson, Wally Wells, Fraser Wilson, Jenn Wilson, Inger Wyatt, Jim Young and John Young.

Donated Goods & Services: Gail Adrienne; Lynne Brookes & Derrick Grimmer; Kevin Brown; Ruth Caspell; Deryck Cowling; Susan Fisher; Winnie Hein; Peter Jeremy; Sarah Lane; Bruce Patterson & Joan Wagner; Betty Penston; Jane Saxton; Chris Scorah; Esther & John Sharp; Marjorie Stewart; Peter & Anneke Van Kerkoerle; Greg & Kat Yoshida

A real estate advertisement featuring a man, Craig McCracken, in a dark jacket. The background is a blurred image of a house. The text "Get Cracken" is written in a white, handwritten-style font across the top. Below the man's name, there is a logo for "Sutton" and the text "Buy or Sell a home using Craig on MLS and 10% of my Commission will go to NALT. 'Helping you make a difference' Call for more details and special offers." To the right, it says "Cell 250-616-8838" and "craig@getcracken.com". At the bottom right, it lists "Sutton Group West Coast Realty, #604-5800 Turner Rd, Nanaimo B.C. V9T 6J4".

We are able to breathe, drink, and eat in comfort because millions of organisms and hundreds of processes are operating to maintain a liveable environment, but we tend to take nature's services for granted because we don't pay money for most of them.

—Eugene Odum



Pre-Authorized Contribution (PAC)
Includes Annual Membership

Complete this section *ONLY* if you want to become a monthly donor.

Yes, I authorize NALT to automatically withdraw from my bank account on the 1st of each month beginning This date _____ (yr/month/day):

- \$10.00
- \$20.00
- \$30.00
- \$40.00
- Other amount: _____
- I have enclosed a cheque marked VOID.

OR

Yes, I authorize NALT to charge my Visa OR MasterCard the 1st of each month:

- \$10.00
- \$20.00
- \$30.00
- \$40.00
- Other amount: _____

Visa M/C

#: _____ Exp: _____

Signature: _____

Beginning: (Month) _____, 20_____

You may change or cancel your contribution at any time by sending NALT written notice.

Please note: You will receive one tax receipt for the total amount of monthly gifts after the end of each tax year.

Your membership & monthly contribution are greatly appreciated.

Nanaimo River Donation Form
I wish to donate to the Nanaimo River Project, to assist with the costs of developing a Nanaimo River stewardship strategy

Donation Categories

\$5,000 to \$9,999	Benefactor
\$1,000 to \$4,999	Hero
\$500 to \$999	Champion
\$100 to \$499	Patron
\$25 to \$100	Friend
less than \$25	Supporter

My donation of \$_____ is enclosed as cash, cheque or credit card (*circle one*)

Cheques should be made payable to NALT – Nanaimo River Strategy Project OR provide credit card info

VISA/ MC# _____

Expiry ___/___ Signature _____

Charitable receipts will be issued for all donations of \$20 or more. TO receive your tax receipt and be on our contact list, please fill out the section below.

NALT's charitable tax # is 893193771

My Name : _____

Mailing Address: _____

City/ Town: _____

Postal Code: _____ Phone: _____

Email Contact: _____

If this donation is being made in the name of someone other than yourself, please give their contact information

 Their Name _____

Mailing Address: _____

City/ Town: _____

Postal Code: _____ Phone: _____

I would like to remain anonymous on all NALT thank you and recognition lists NO / YES (*circle one*)

NALT Thanks You for Your Support!

Donation/Pledge Form
THE MOUNT BENSON CAMPAIGN II

Please send this completed form to:
Nanaimo & Area Land Trust
#8- 140 Wallace Street
Nanaimo, BC
V9R 5B1

DONOR CATEGORIES

- \$50,000 or more Ultimate Benefactor of Benson
- \$10,000 to \$49,999 Benefactor of Benson
- \$5,000 to \$9,999 Hero of Benson
- \$3,000 to \$4,999 Grand Champion of Benson
- \$1,000 to \$2,999 Champion of Benson
- \$500 to \$999 Patron of Benson
- \$100 to \$499 Friend of Benson
- less than \$100 Sponsor of Benson

My donation of \$_____ is enclosed
 cash, cheque or credit card *(check one)* **AND/OR**
 I would like to pledge \$_____ in ____ (#)
 payments made monthly/annually/other_____

Make cheque payable to NALT- Mount Benson Acquisition.

Visa/MC# _____ Exp Date: _____

Tax receipts issued for donations of \$20 or more.

My name is _____
 (for tax receipt)

Please record this contribution in the name of :
 (if different) _____

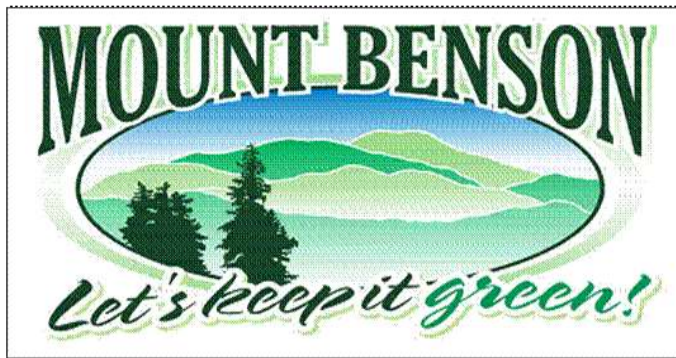
I would like to remain anonymous (Check Here)

My street address: _____

City: _____ postal code _____

Phone: _____ Email: _____

Thank you for your continued support!
 OFFICE ONLY: TR # _____



NALT MEMBERSHIP FORM

Please send this completed form to:
Nanaimo & Area Land Trust
 #8-140 Wallace St. Nanaimo, BC V9R 5B1

I would like to:

- a) Renew my NALT Membership
- b) Begin a NALT Membership
 (Check the category that applies to you)
 ___ Senior/Low Income/Student - \$10
 ___ Individual/Family - \$20
 ___ Business- \$50
- c) I would like to become a monthly donor:
 Please fill out the reverse side of this form in order to set up a
 Pre-Authorized Contribution (automatically includes membership)
 OR
- d) I would like to make a one time donation of:
 \$_____

Make cheque payable to: Nanaimo & Area Land Trust
 OR

Please charge my Visa or Mastercard:

Credit Card # _____ Exp Date : _____

Signature: _____

PLEASE PRINT CLEARLY

name _____

mailing address _____

city _____ Postal code _____

telephone _____ email address _____

Would you like to remain anonymous?

*Tax receipts will be issued for contributions of \$20 or more.
 NALT does not sell, trade or loan our database of donors, members or
 contacts to individuals or other organizations*

Thank you for your continued support!

OFFICE ONLY: TR # _____