

## Inside:

<b>AGM</b>	<b>2</b>
<b>Nursery News</b>	<b>3</b>
<b>Got Bats?</b>	<b>4</b>
<b>Meadow Restoration</b>	<b>4</b>
<b>Got Turtles?</b>	<b>5</b>
<b>Job Opportunity</b>	<b>6-7</b>
<b>Forest Therapy Fundraiser</b>	<b>8-9</b>
<b>New Staff</b>	<b>10</b>
<b>Thank You All</b>	<b>11-12</b>
<b>Membership Forms</b>	<b>13</b>
<b>Donation Forms</b>	<b>14</b>



Volunteers set up bat monitoring equipment in Linley Valley. See story page 4

## NALT, Syuwén'ct School and the City of Nanaimo Collaborate to Protect Northfield Marsh from Sewage Discharge.

Students at Syuwén'ct Elementary School (formerly Coal Tye Elementary) recently followed their noses to help stop sewage from getting into Northfield Marsh.

As part of their participation in the Nanaimo & Area Land Trust's (NALT) *School Water Stewards Program*, Syuwén'ct students have been learning about the features and functions of the marsh, which is located near their school, and participating in stewardship activities in the surrounding riparian lands.

While on regular marsh walks the students would complain of a sewage-like smell in a certain area along the trail. "The nose knows," says Syuwén'ct teacher Judith Tye, "The students knew that smell didn't belong in the marsh and alerted their teachers to it." The teachers noticed that the odour was emanating from a stormwater drain entering the marsh and spotted what looked like toilet paper near the outfall.

They sent the images and observations to NALT. NALT staff visited the site, confirmed the observations and marked the location with a GPS waypoint. This information was sent to Nanaimo's Environmental Protection Officer and from there on to the City's Drainage Department. Their investigation revealed an improperly connected sanitary drain which was directing household sewage into the stormwater drain. City officials contacted the property owners, and the problem is being fixed.

"If it hadn't been for the keen observations of our "Stewards of the Land" this issue may have gone undetected for a long time." says Syuwén'ct Principal Dr Diane Charles, "We are so proud of our students!"

"This is an example of what collaborative stewardship looks like," says NALT Environmental Education Coordinator Sarah Spencer. The students at Syuwén'ct have learned about the marsh and its associated ecosystems. They have developed observational skills and understand what is "normal" for the natural area surrounding their school. Because of this, they were able to quickly detect an abnormality and notify the appropriate people to rectify the issue. This is what building a culture of stewardship looks like.

The NALT School Water Stewards Program is a growing initiative available for schools in School Districts 68 and 69, and is supported in part by the Regional District of Nanaimo's Drinking Water and Watershed Protection Program. The program is currently being provided in five area schools.

**NEWS FROM NALT**  
is published by the  
Nanaimo & Area Land Trust

NALT's Mission is:  
*to support, promote and protect  
the natural values of land and  
water in our area*

The Nanaimo & Area  
Land Trust Society  
was registered as a B.C. Society  
in 1995, and subsequently was  
granted charitable tax status  
and the right to hold  
conservation covenants.  
Charitable tax #:  
893193771 RR0001

**Staff**

Executive Director:  
Paul Chapman  
Administrative Assistant:  
Nanette Leather  
Stewardship Manager:  
Linda Brooymans

**Contractors**

Nursery Coordinator: Susan Fisher  
Conservation Covenants Manager:  
Emily Barnewall  
Financial Manager: Cyndi Pitvor  
Cleaning Services: Jen Wilson

**Pro-bono Services**

Lawyer: John Manning  
Investment Management:  
Andre Sullivan

**Board of Directors**

Marni Brown  
David Drakeford  
Nina Evans-Locke (Co-Chair)  
Dean Gaudry (Co-Chair)  
Denis Hughes  
Linda Nichol  
Jack Tieleman  
Norm Wagenaar  
Wally Wells (Secretary)  
Fraser Wilson (Treasurer)

**Contact us at:**

The NALT Stewardship Centre  
Madrona Building (lower floor)  
Suite #8, 140 Wallace Street  
Nanaimo, B.C. V9R 5B1  
phone: (250) 714-1990  
email: [admin@nalt.bc.ca](mailto:admin@nalt.bc.ca)  
[www.nalt.bc.ca](http://www.nalt.bc.ca)

## 27<sup>th</sup> Annual General Meeting

On June 8<sup>th</sup>, twenty-five NALT members and few more future members attended the online Annual General Meeting. Members learned of the of the financial state at the end of 2021 and the various, passages, milestones and initiatives that impacted NALT and our community in 2021.

In November, Anneke Van Kerkoerle passed away. With her husband Peter, the Van Kerkoerles supported a number of environmental and social justice groups and initiatives. Anneke and Peter welcomed NALT's native plant nursery to their land and ultimately donated their property to NALT through a Life Estate agreement.

Attendees also learned of the contributions of volunteers to various activities including the operation of the *Natural Abundance Native Plant Nursery* and other initiatives and fundraisers. The volunteers at the nursery continue to donate hundreds of hours individually, and thousands of hours collectively, to propagation and promotion of native plants in gardens, landscaping and restoration projects. Stewardship Manager Linda Brooymans gave an engaging presentation on the myriad of activities she has undertaken in her role.

The business of the meeting was concluded with the election of Board Directors. David Drakeford, Nina Evans-Locke, Jack Tieleman, Norm Wagenaar and Wally Wells were re-elected for two-year terms to the Board. Marni Brown and Denis Hughes were newly elected to one-year terms. At next year's AGM, should they choose to run, Marni and Denis will join Dean Gaudry, Linda Nichol and Fraser Wilson on the ballot. The one-year term was designed to rebalance the number of Directors being elected in each two-year cycle.

Following the business meeting, Dr. Andrew Day, CEO of the BC Parks Foundation presented and fostered a discussion on the steps the foundation has taken to become a lead actor in conservation acquisitions throughout the province. NALT looks forward to working with the BC Parks Foundation on future projects in our area.

One piece of business from the previous AGM that wasn't touched on at the meeting was an action item from 2021. At that meeting, Membership asked the NALT Board to add language in the Acquisition, Holding and Disposition of Land policy to allow for membership input and consultation regarding sale of any lands owned by NALT. In July of 2021, the NALT Board amended its policy on disposition of land to state *the Board will give notice to its members of the proposed disposition, will solicit their views, and will consider those views.*





## News from the NALT Native Plant Nursery

The 2022 spring was wet with cool rain. Many plants are verdant and taller than usual. Trees sprouted more luxuriously than we remember. The wet spring brought repeat and new customers to the nursery, many of them bringing their nursery inventory list already marked up to shop. Christmas tree rentals were returned, most looking great. Good job, Christmas tree renters!

### Trends

- Shrubs sold well, a great season to plant small shrubs in their forever homes.
- Seeds also sold well. Besides on site, many customers from beyond our Coastal Douglas Fir region requested seeds through our mail order business.
- As it got warmer, we sold plenty of native herbaceous forb plants, lovely in colours of yellow, lavender, orange, cream.
- Pollinators were on many shoppers' minds. Volunteers showed customers lists of pollinator friendly plants; these lists include a popular sheet that indicates plants that pollinators like and deer (at least in theory) don't like.

The nursery was fortunate to assist several groups in plant selection for their spring projects, among them: Green Faith Circle with a planting project at Bowen Park, Parkview Terrace condominiums, Town of Ladysmith with a native plant and seed giveaway to encourage native planting, Ecole North Oyster Secondary School, Cedar Elementary School, Khowhemaw School in Duncan, and 8<sup>th</sup> Avenue Learning Center in Port Alberni.

As we celebrated Peter and Anneke VanKerkoerle's lives, we honour their legacy in their friendship and the donation of their beautiful Parnassian Woods. Nephew Kees and Niece Lilleke came from Europe to select a Pacific Dogwood tree to plant in the Memorial Garden sitting area. A hardy and hearty crew of workers volunteered to build a shelter across the road from the nursery, complete with signage supplied by Aquarius Designs. The shelter will be available for NALT and the NALT Nursery educational and social activities.

The nursery is happy to welcome 4<sup>1/2</sup> new volunteers this spring – Bob, Kurstin, Erin, and Mika who brings 21 month old Arthur (our youngest enthusiastic gardener). Welcome, everyone, we are so glad you've joined us!

Spring and renewed Parnassian Woods trails have allowed us to host five interpretive walks. If your group would like to schedule a walk, contact [plants@nalt.bc.ca](mailto:plants@nalt.bc.ca).

### Request

We need 1 inch white metal venetian blinds to make labels for every pot in the nursery. If you have discards, please consider us. No more pots needed for now.

Happy Spring into Summer, Everyone!

Submitted by Susan Fisher for the Nursery Committee



## Mid-Vancouver Island Bat Project - Got Bats?

In late 2021 NALT's Stewardship Manager took on the role as the Mid-Vancouver Island coordinator for the BC Community Bat program. This program responds to bat observations and reports, queries from the public about bats in human structures, and carries out public education and awareness- building on bat conservation and assists in collection of bat count data. Bat counts are our primary way to learn more about bat populations in our area. They can easily be done by community stewards or citizen scientists – all you have to do is spend some time by a known bat roost at sunset when the bats first emerge to forage and count how many bats come out.

In our region there is very little data on our local bat populations – we need the community's help to find out where bats are roosting so we can carry out bat counts. If you have bats on your property or even if you see them in the evenings please let us know!

This year NALT has partnered with wildlife research biologist Scott Wilson to collect acoustic monitoring data in areas that have the potential to be bat habitat. With volunteers, we have been setting out our equipment that records bat calls at a number of protected and unprotected areas in our region. This data will help us better understand the conservation needs of our local bats. NALT is always happy to have new volunteers join our stewardship projects – so please email [stewardship@nalt.bc.ca](mailto:stewardship@nalt.bc.ca) if you would like to be involved, or if you would like to report any bat observations or if you know the location of any roosts.

---

## Bowen Park Pollinator Meadow Restoration

If you are familiar with Bowen Park, you might know the meadow adjacent to the Millstone River. NALT has been working with the city to restore this meadow after it received an ill-timed mow or two during the pandemic, causing the abundance of native flowers to drastically diminish and allowing non-native weedy species to take hold. Our first steps have been to create signage about the wildflowers, and asking the public to help with restoration by not trampling or picking flowers. The city has also installed large boulders to set off the meadow from walking paths (and deter any errant mowers from wandering into it). With dedicated volunteers we have been monitoring the meadow monthly since March, creating a plant inventory and taking note of phenophase (the different stages of plant growth from first leaves to setting seeds). At present we have identified 22 native species growing on site. Next steps will be to consult with experts to determine if a mowing regime will be needed and if seeding will be required. Historically, Garry Oak meadow plant diversity and abundance was maintained through controlled burns, but as this is not considered practical at the site, a carefully thought-out mowing regime can approximate the same beneficial effects.

*The practical importance of the preservation of our forests is  
augmented by their relations to climate, soil and streams.*

**- John Muir**

## Western Painted Turtle

This spring NALT continued our partnership with provincial biologists, The Nature Trust of BC and the City of Nanaimo on Western Painted turtle conservation. Our objective is to better understand what sites are used by our native turtle and what the population trends are at those sites. Once this is known, we will be able to determine what protections or enhancements might be needed to ensure their survival in our region. The cool and wet spring made our efforts at conducting basking surveys a real challenge. Basking surveys are the easiest and best way to determine turtle population numbers and to see if there are multiple age cohorts at a site. Turtles only haul out to bask when the air temperature is warmer by a certain margin than the water temperature (usually in April to early May). Additionally, we have also been collecting information on nesting and tracking nesting success at known nesting sites in our region.

The Pacific Coast population of Western Painted Turtle are critically endangered. Major threats to their survival include loss of aquatic and riparian habitat due to residential, industrial, and agricultural development, road expansion and vehicular mortality as well as non-native and invasive species. WPT are slow to reach maturity and have low recruitment rates (few hatchlings that survive to adulthood). There are two known nesting areas in Nanaimo for Western Painted turtles, and one in Lantzville. If you see a female turtle nesting, please email [stewardship@nalt.bc.ca](mailto:stewardship@nalt.bc.ca), so we can quickly add the nesting spot to our list of nests and protect it from predators with caging. Be sure to give nesting females lots of space (at least 5 m) to lay her eggs in peace. A spooked female that abandons egg-laying might be face serious health risks if she becomes eggbound (unable to pass eggs). The only time that it is appropriate to pick up a turtle is if it is trying to cross a road, or if you find a turtle that has been injured in some way and requires veterinary care.

### HAVE YOU SEEN A TURTLE?

The Western Painted Turtle is **THREATENED** and needs your help.

The Western Painted Turtle is the only native turtle species in B.C.

The Red-eared Slider is an introduced species.

SPECIES DIFFERENCES	
<b>SHELL SHAPE</b>	<b>UNDERSIDE COLOUR</b>
Flat Smooth	Red
Domed Rugged	Yellow

The Province of B.C. is studying turtles to learn more about distribution and sustainability.

**PLEASE SUBMIT TURTLE PHOTOS, LOCATION & DATE**  
to: [FrontCounterBC@gov.bc.ca](mailto:FrontCounterBC@gov.bc.ca) or call 250 751-7220

 Ministry of Forests, Lands, Natural Resource Operations and Rural Development



WPT hatchling at Diver Lake May 2022

Western Painted turtles often occupy the same habitat as a non-native species, the Red-eared Slider. Red-eared sliders compete with Western Painted turtles for resources such as basking locations, nesting spots and food. They also have the potential to hybridize with our native species (as has occurred at a few sites on the mainland) and to spread diseases such as respiratory infections. The easiest way to distinguish a Western Painted Turtle from a Red-eared slider is to look at the plastron (the lower shell); if the plastron is a bright reddish-orange then it is a Western Painted, if it is yellow then it is a Slider. Not all Sliders have a clearly visible red ear. If you have an observation to share, it is most helpful to submit a photo to help us verify species.

Our project can always use more volunteer support! Sign up to help with nesting surveys for the rest of the summer nesting season, or for basking surveys next spring.



## Job Posting

### School Water Stewards Coordinator 32 hours/week - \$23.15/hour

Would you like to join a team that makes a difference in your community? Since 1995 the Nanaimo & Area Land Trust (NALT) has worked to fulfil its mission – *to support, promote and protect the natural values of land and water in our area*. The role of School Water Stewards Coordinator is an integral part of the organization. NALT is best known for raising the funds to purchase Cottle Lake Park and Mount Benson Regional Park. NALT's stewardship activities include community education, outreach, habitat restoration, and land protection, all contributing to build a culture of stewardship. We work hard, have fun doing it while providing positive impacts on where we live. Join our team!

The School Water Stewards Coordinator role contributes to stewardship by:

- Delivering curriculum-connected place-based water stewardship lessons to classes in School District 68 and 69,
- Liaising with program partners to develop new lessons and refine delivery,
- Growing the list of participating school classes thereby building a culture of stewardship,
- Coordinating with contract educator assistant(s) to effectively deliver the program,
- Generating occasional reports as requested by the Executive Director for committee and Board meetings, contributing to NALT team collaboration (**see details in the Job Description next page**).

An effective applicant will include information about their education or experience relating to water resource management or stewardship, and education or experience in working with children and youth in their cover letter.

Driver's license an asset.

The position is **32 hours per week**, compensation is **\$23.15 per hour**. After a three-month probationary period, the employee is eligible to register for a **benefits plan**.

To apply, please send a resume and cover letter addressed to the NALT Hiring Committee at [paul@nalt.bc.ca](mailto:paul@nalt.bc.ca) or mail or deliver in-person to the NALT office, #8 – 140 Wallace Street, Nanaimo BC V9R 5B1

Applications will be received until 5 pm on Monday, July 25<sup>th</sup>.

### Changes

*NALT extends its thanks to Sarah Spencer for her excellent work this past year growing the School Water Stewards from project to program. As School Water Stewards Education Coordinator, Sarah built on the lessons developed by the Job Creation Program funded project team, and expanded connections with classrooms in School Districts 68 and 69. Through her good work, the next Program Coordinator will have a strong foundation to build the program even further.*

*Good luck and thank you Sarah.*



## School Water Stewards (SWS) Coordinator

The SWS Coordinator is responsible for coordination, development, and delivery of the School Water Stewards program to schools in School Districts 68 and 69.

### Reports To

Reports to the Stewardship Manager and the Executive Director

### Lines of Communication

The Executive Director (ED) is the Board's conduit for all projects and day-to-day operations to Staff/Volunteers and vice versa (e.g. communication should go via the Executive Director), except in situations where a Board member(s) sits on an Advisory or Management Committee that works directly with Staff/Volunteers.

The SWS Coordinator communicates issues and information to the Stewardship Manager and the Executive Director.

***NOTE: Regardless of the specific roles & responsibilities listed, the SWS Coordinator will, whenever possible or required, participate in all aspects of the organization from washing dishes to constructing boardwalks and stuffing envelopes.***

### Responsibilities

The responsibilities are to:

- Carry out the School Water Stewardship workplan as it exists from time to time

- Develop and deliver SWS lessons to school classes within School Districts 68 and 69.

- Coordinate and Work with Program Assistant(s)

- Identify and communicate program staffing and material needs to the ED

- Promote the program to educators in SD 68 and 69

- During periods of school vacation, develop program lessons and explore providing water stewardship education opportunities to school catchment communities.

- Report on program activities as required by the ED

- Office Management - the SWS Coordinator will

- As a team handle incoming phone calls, e-mails and answering machine messages, ensuring coverage in concert with all staff; and forward messages to the appropriate recipient

- Maintain program materials, files and folders

- Communications & Information – the SWS Coordinator will:

  - Participate in the preparation of the quarterly News from NALT – preparing stories, selecting photos, and participating in layout and production of the newsletter as required

  - As needed, create and/or assist with layout and production of in-house printed materials including brochures, posters, flyers, cards, signage, etc

  - As needed, coordinate other publishing requirements with graphic designers, printers and suppliers

  - Provide back-up to the ED for public relations and media stories as delegated.

- Meetings – the SWS Coordinator will:

  - In the absence of the ED, attend community or agency meetings in his/her place as delegated

  - Also attend such meetings with the ED as appropriate

  - Attend regular Team meetings as required

***You know who's going to build that better world?  
It's the youth.  
Children will do things that are now considered impossible.***

***-Kacey McCallister***

## Forest Therapy Fundraiser

Forest Therapy is a research-based framework for supporting healing and wellness through immersion in forests and other natural environments.

Forest Therapy was inspired by the Japanese practice of Forest Bathing or shinrin-yoku, which translates as “bathing oneself in the atmosphere of the forest.” Forest bathing began in Japan in the 1980s, and has recently grown more popular worldwide and is considered preventative health care. Amos Clifford, founder of the Association of Nature and Forest Therapy guides, combined the science of Forest Bathing with his training in psychotherapy, to develop an intentional sequence of invitations led by a trained guide. The experience is not like a hike in the woods, nor is it a naturalist walk to learn about the surroundings. Each guided invitation is a practice for your mind, body and spirit in relationship with nature.

During a Forest Therapy walk you will:

- Be guided to immerse your senses in the qualities of the forest and the more-than-human world.
- Focus on the relationship between you and nature rather than just taking a walk.
- Experience how partnering with nature calms your nervous system.

"My goal with Forest Therapy is to have people fall in love with the forest and see themselves reflected in it. In essence, to fall in love with themselves. Because we naturally want to care for what we love, self-care improves and so does stewardship of the land." Janice Furevick.

Walks are approximately 2.5 hours. Location is determined based on weather and the mobility factors of those signed up.



*A walk in nature walks the soul back home.*

**- Mary Davis**



# **FOREST THERAPY WALK WITH JANICE**

**100% of proceeds go to NALT  
book online at [janicefurevick.com](http://janicefurevick.com)  
or call/text 250-618-2078**

**Sunday, July 24th**

**9:30 - 12:00**

**Location: TBA**

**\$40/person**

**\$70/couple**

**Forest Therapy is inspired  
by the Japanese practice  
of Forest Bathing  
or Shinrin Yoku**

**The Forest is the Therapist,  
the guide just opens the door.**

**Amos Clifford**



Janice is a certified  
guide with the  
Association of Nature  
and Forest Therapy  
guides.





## New to NALT

The Nanaimo & Area Land Trust is happy to welcome Nanette Leather to the team. Nanette brings extensive experience in the non-profit sector having worked for a number of years in various roles at the Central Vancouver Island Multicultural Society.

When a position as NALT's Administrative Assistant became available, Nanette seized the opportunity as a fit with her work/life balance goals and a chance to work for another organization that aligned with her beliefs and interests.

As you can see from the picture, Nanette's experience herding cats will be an asset in her new role.

NALT is lucky to have someone with Nanette's experience and good nature join our office culture.

*Teamwork is the best kind of work really.*

**- Sigrid**

# AQUAPARIAN

## Environmental Consulting Ltd.

SUITE 203 - 321 WALLACE STREET, NANAIMO, BC V9R 5B6 • [WWW.AQUAPARIAN.COM](http://WWW.AQUAPARIAN.COM)

TEL (250) 591-2258 EMAIL [SBONAR@AQUAPARIAN.COM](mailto:SBONAR@AQUAPARIAN.COM) | [CZAMORA@AQUAPARIAN.COM](mailto:CZAMORA@AQUAPARIAN.COM)



**Windward**  
Neighbourhood  
Pub and Wine & Beer Store  
*We are leading the way in*  
**Quality • Service • Atmosphere**

#14-1588 Boundary Crescent, Nanaimo, BC V9S 5K8

PHONE: Pub.... (250) 754-7111

Wine & Beer.... (250) 754-7500 FAX ....(250) 754-7530

## THE BACKYARD

### Wildbird & Nature Store



**Quality Birding Supplies  
and Expert Advice**  
Tel: (250) 390-3669  
[www.go-nanaimo.com/birds](http://www.go-nanaimo.com/birds)

#6-6404 Metral Drive, Nanaimo, B.C.V9T 2L8

## ~ THANK YOU ALL ~

*Many thanks to all the individuals, organizations and businesses who have donated their time and skills as volunteers, contributed items or services, made financial donations, renewed, or started a membership or have begun a monthly pre-authorized contribution (PAC).*

*March 10 to July 9, 2022*

**Individual Donations & New Memberships – NALT:** Anonymous 1, Anonymous 2, Bertha Abma, Lynne Alton, Connie Baird, Doug & June Bogle, Claudia Boyce, Marni Brown, Holly Calvin, Trudy Chatwin, Marilyn Cheveldayoff, Shirley Christle, Constance Clifford, Julie Devereux, Nancy Dickinson, Sally Fisher, Inge Fleet, Norah Forrest, Margaret Fraser, Ross Fraser, Gina Gall, Terry Grantner, Brenda Grice & Douglas Anderson, Gillian Guy, Louise Hamilton, Cheryl Headey, Theresa Hood, Kevan Hudson, Tanya Jeebacher, Jennifer Jenkins, Reta Johnson & Jim Bell, Barb Kerfoot, Dorothee Kieser, Joseph Kraskin, Leonard & Sharon Krog, Donna Laing, Nanette Leather & Steve Howie, Carolyn Lewis, Janeane MacGillivray, Peter & Kerry Mason, Janet McVicar, Iris Mennie, Lin Neufeld, Penny Pepper, Mary Peters, Cyndi Pitvor, Wendy Van Oldenborgh, Steve Romanik, June Ross, Derek Rundell, Jane Saxton, John Shelbourn, Sarah Spencer, Lynda Stevens, Faith Takishita, Timi Thornton, Norm Wagenaar & Margie Johnson, Dorothy Wallace, Erik & Bobbie Warners, John Weir, John Wells, Amy Wilson

### **Donations - Westwood Ridges - Mt Benson Acquisition Phase II:**

**Donations – Nanaimo River Property Acquisition:** Janeane MacGillivray in honour of Gail Matt

**Donations – Nanaimo River Watershed Roundtable:** Aquaparian Environmental Consulting Ltd

**Donations – In honour of:** Yvonne Visser from Deryck Cowling

**Donations – In memory of:** Rodger Christle from Shirley Christle, John & Diane Wardle from Margaret Fraser, Anneke & Peter Van Kerkoerle from Doris & Peter Hentze, Anneke & Peter Van Kerkoerle from Leonard & Sharon Krog, Rob Lawrance from Elizabeth Penston

### **Natural Abundance Native Plant Nursery - Donations and In-kind Goods:**

Linda Brooymans, Canadian Federation of University Women Walking Group, Deryck Cowling, David Fisher, Dean Gaudry, Pat Hogue, Elise Hoy, Peter Jeremy, Anne Kerr, Najma Martens, William & June Merilees, Siobhan Wagner & Bruce Patterson, Terry Patterson, Colleen Rohdes, Harriet Rueggeberg, Derek Rundell, Nikki Toxopeus, Coco Vanzyl, Norm Wagenaar, Pamela Walker

**Business & Organization Donations – NALT:** BC Conservation Foundation – BC Bat Program, Charities Aid Foundation, Fanny Bay Salmonid Enhancement Society, Peter Mason Geomatics, Provincial Employees Community Services Fund,

**New Pre-authorized Contributions:** Claudia Boyce, Terry Grantner, Theresa Hood, Kevan Hudson, Janet McVicar

*Continued on page 12.*

*Individually, we are one drop. Together, we are an ocean.*

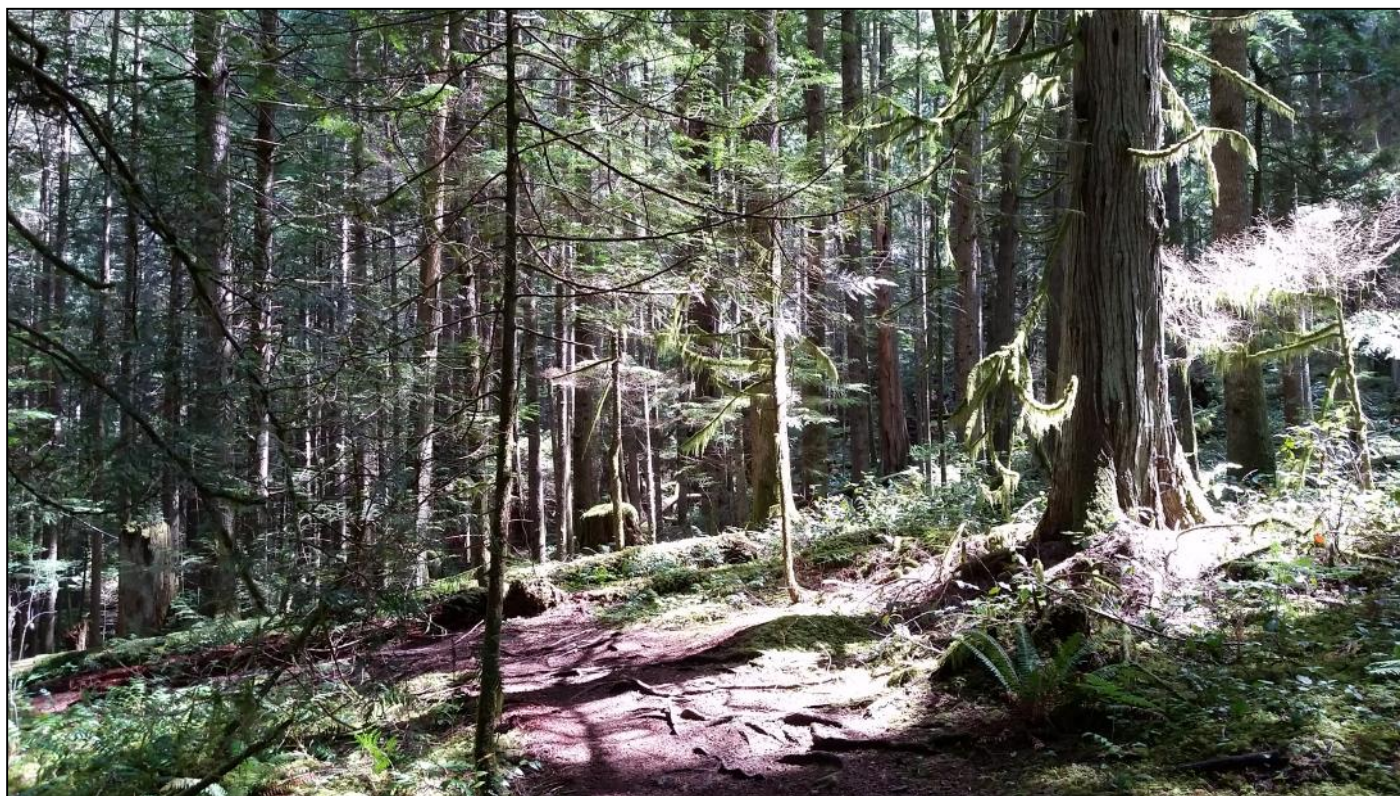
**- Ryunosuke Satoro**



## ~ THANK YOU ALL ~

***Many thanks to all the individuals, organizations and businesses who have donated their time and skills as volunteers, contributed items or services, made financial donations, renewed, or started a membership or have begun a monthly pre-authorized contribution (PAC).  
March 10 to July 9, 2022***

**Volunteers since March 10, 2022:** Lynne Alton, Shannon Appland, Holly Blackburn, Doug Bogle, Marni Brown, Chris Burnley, Ron Busche, Gary Caspell, Ruth Caspell, Paul Chapman, Trudy Chatwin, Saffi Christensen, Deryck Cowling, Jennifer Davidson, Katie Davidson, Julie Devereux, Kelsey Dougan, David Drakeford, Chuck Easton, Doris Edwards, Bob Fenton, Susan Fisher, Dean Gaudry, Erin Gibbs, Mike Gilmour, Lee Grimmer, Jean-Michel Hanssens, Cooper Henry, Mike Henry, Miller Henry, Pat Hogue, Melany Hong, Sarah Hong, Theresa Hood, Dan Hooper, Noel Hornby, Kevan Hudson, Denis Hughes, Peter Jeremy, Caroline Josefsson, Alex King, Bob Kissinger, Barbara Kerfoot, Sarah Killien-Kulla, Hitomi Kimura, Abi Kulla, Serena Kulla, Shawna Lindemann, Nina Locke, Jeff Lott, Alex Lupin, Bruce McKnight, Wayne Morgan, Geoff Mumford, Linda Nichol, Anette Noble, Chloe Plynaar, Ton Plynaar, Janice Porteous, Arthur Reid, Mika Reid, Kurstin Rispin, Colleen Rohde, Doug Roszmann, Harriet Rueggeberg, Evangelina Schultz, Debbie Sifton, Gary Smart, Rafael Soares, Lynda Stevens, James Taylor, Jack Tieleman, Nikki Toxopeus, Coco van Zyl, Norm Wagenaar, Kevin Walsh, Jenny Webb, Wally Wells, Amy Wilson, Fraser Wilson, Scott Wilson, Les Yamada and students from Syuwén'ct Elementary School, Departure Bay Elementary School, Ecole Hammond Bay Elementary and Nanaimo District Secondary School.



***The journey of a thousand miles begins with one step.***

***- Lao Tzu***



## NALT MEMBERSHIP FORM

Please send this completed form to:

**Nanaimo & Area Land Trust**  
#8-140 Wallace St. Nanaimo, BC V9R 5B1

I would like to:

a) ☐ **Renew my NALT Membership**

b) ☐ **Begin a NALT Membership**

(Check the rate that applies to you)

\_\_\_ Senior/Low Income/Student - \$10

\_\_\_ Individual/Family - \$20

\_\_\_ Business- \$50

c) ☐ **I would like to become a monthly donor:**

(Please see Pre-Authorized Contribution PAC form)

OR

d) ☐ **I would like to make a one time donation of:**

\$ \_\_\_\_\_

Make cheque payable to: Nanaimo & Area Land Trust

OR

Please charge my Visa or Mastercard:

Credit Card # \_\_\_\_\_ Exp Date : \_\_\_\_\_

Signature: \_\_\_\_\_

PLEASE PRINT CLEARLY

Circle 'Point of Contact': email / mailing address / phone

name \_\_\_\_\_

mailing address \_\_\_\_\_

city \_\_\_\_\_ Postal code \_\_\_\_\_

telephone \_\_\_\_\_ email address \_\_\_\_\_

Would you like to remain anonymous? ☐

*Tax receipts will be issued for contributions of \$20 or more.*

**NALT does not sell, trade or loan our database of donors, members or**

**contacts to individuals or other organizations**

**Your membership initiates on the date your form is processed.**

**Thank you for your continued support!**

OFFICE ONLY: TR # \_\_\_\_\_



## Pre-Authorized Contribution (PAC)

**Includes Annual Membership**

*Complete this section ONLY if you want to become a monthly donor.*

Yes, I authorize NALT to automatically withdraw from my bank account on the 1st of each month beginning

This date \_\_\_\_\_ (yr/month/day):

☐ \$10.00

☐ \$20.00

☐ \$30.00

☐ \$40.00

☐ Other amount: \_\_\_\_\_

☐ I have enclosed a cheque marked **VOID**.

**OR**

Yes, I authorize NALT to charge my Visa OR MasterCard the 1st of each month:

☐ \$10.00

☐ \$20.00

☐ \$30.00

☐ \$40.00

☐ Other amount: \_\_\_\_\_

Visa ☐ M/C ☐

#: \_\_\_\_\_ Exp: \_\_\_\_\_

Signature: \_\_\_\_\_

Beginning: (Month) \_\_\_\_\_, 20 \_\_\_\_\_

You may change or cancel your contribution at any time by sending NALT written notice.

*Please note: You will receive one tax receipt for the total amount of monthly gifts after the end of each tax year.*

**Your membership & monthly contribution are greatly appreciated.**

**Your membership initiates on the date your form is processed.**

**Thank you for your continued support!**



**Donation/Pledge Form**  
**THE MOUNT BENSON CAMPAIGN II**



**DONOR CATEGORIES**

\$50,000 or more	Ultimate Benefactor of Benson
\$10,000 to \$49,999	Benefactor of Benson
\$5,000 to \$9,999	Hero of Benson
\$3,000 to \$4,999	Grand Champion of Benson
\$1,000 to \$2,999	Champion of Benson
\$500 to \$999	Patron of Benson
\$100 to \$499	Friend of Benson
less than \$100	Sponsor of Benson

My donation of \$\_\_\_\_\_ is enclosed  
cash, cheque or credit card (check one) **AND/OR**

I would like to pledge \$\_\_\_\_\_ in \_\_\_\_ (#)  
payments made monthly/annually/other\_\_\_\_\_

*If the Mt Benson II acquisition campaign cannot be  
completed, then the funds will be held in an Acquisitions  
Account to be used for another acquisition campaign.*

**Make cheque payable to NALT- Mount Benson Acquisition.**

**Circle 'Point of Contact': email / mailing address / phone**

My name is \_\_\_\_\_

(for tax receipt)

Please record this contribution in the name of :

(if different) \_\_\_\_\_

*I would like to remain anonymous (Check Here) ☐*

My street address: \_\_\_\_\_

City: \_\_\_\_\_ postal code \_\_\_\_\_

Phone: \_\_\_\_\_ Email: \_\_\_\_\_

**Thank you for your continued support!**

OFFICE ONLY: TR # \_\_\_\_\_



**Nanaimo River Donation Form**

I wish to donate to the Nanaimo River Project,  
to assist with the costs of developing a Nanaimo River  
stewardship strategy

**Donation Categories**

\$5,000 to \$9,999	Benefactor
\$1,000 to \$4,999	Hero
\$500 to \$999	Champion
\$100 to \$499	Patron
\$25 to \$100	Friend
less than \$25	Supporter

**My donation of \$\_\_\_\_\_ is enclosed as cash, cheque  
or credit card (circle one)**

Cheques should be made payable to **NALT – Nanaimo River  
Strategy Project** OR provide credit card info

VISA/ MC# \_\_\_\_\_

Expiry \_\_\_\_ / \_\_\_\_ Signature \_\_\_\_\_

Charitable receipts will be issued for all donations of \$20 or more. TO  
receive your tax receipt and be on our contact list, please fill out the  
section below.

*NALT's charitable tax # is 893193771*

My Name : \_\_\_\_\_

Mailing Address: \_\_\_\_\_

City/ Town: \_\_\_\_\_

Postal Code: \_\_\_\_\_ Phone: \_\_\_\_\_



Email Contact: \_\_\_\_\_

If this donation is being made in the name of someone other  
than yourself, please give their contact information

Their Name \_\_\_\_\_

Mailing Address: \_\_\_\_\_

City/ Town: \_\_\_\_\_

Postal Code: \_\_\_\_\_ Phone: \_\_\_\_\_

I would like to remain anonymous on all NALT thank you  
and recognition lists **NO / YES (circle one)**

**NALT Thanks You for Your Support!**

(OFFICE ONLY) TR# \_\_\_\_\_